

Diagramma di portata
Load Diagram

I
GB

Curbes de charges
Lastkurven

F
D

Curvas de cargas

E

CTT 141-6

		CTT 141-6											
		10	15	20	25	30	35	40	45	50	55	60	
3 t	- 36.8 m	3	3	3	3	3	3	2.72	2.36	2.08	1.84	1.65	
3 t	- 35.2 m	3	3	3	3	3	3	2.56	2.21	1.92	1.69	1.5	
6 t	- 19.51 m	6	6	5.83	4.51	3.64	3.02	2.56	2.21	1.92	1.69	1.5	
3 t	- 41.63 m	3	3	3	3	3	3	3	2.74	2.41	2.15		
3 t	- 39.86 m	3	3	3	3	3	3	2.99	2.58	2.26	2		
6 t	- 22.05 m	6	6	6	5.2	4.21	3.51	2.99	2.58	2.26	2		
3 t	- 45 m	3	3	3	3	3	3	3	3	2.65			
3 t	- 43.13 m	3	3	3	3	3	3	3	2.85	2.5			
6 t	- 23.83 m	6	6	6	5.68	4.61	3.85	3.29	2.85	2.5			
3 t	- 45 m	3	3	3	3	3	3	3	3				
6 t	- 24.85 m	6	6	6	5.96	4.84	4.05	3.46	3				
3 t	- 40 m	3	3	3	3	3	3	3					
6 t	- 25.11 m	6	6	6	6	4.9	4.1	3.5					
3 t	- 35 m	3	3	3	3	3	3						
6 t	- 26.16 m	6	6	6	6	5.14	4.3						
3 t	- 30 m	3	3	3	3	3							
6 t	- 26.23 m	6	6	6	6	5.15							

Altre installazioni
Other configurations

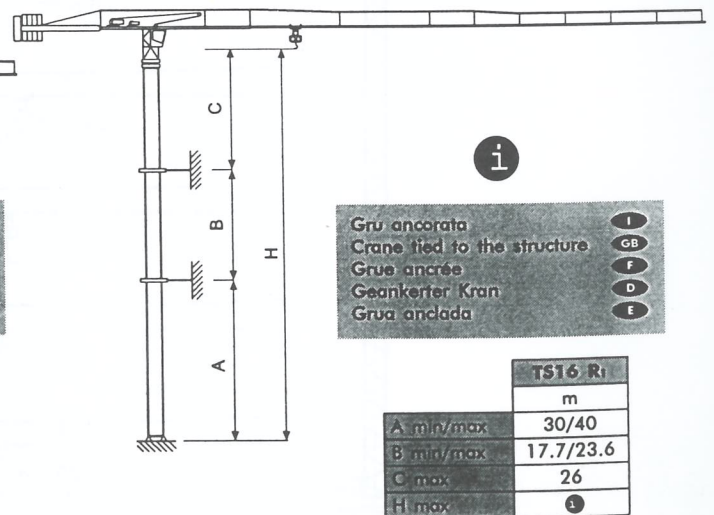
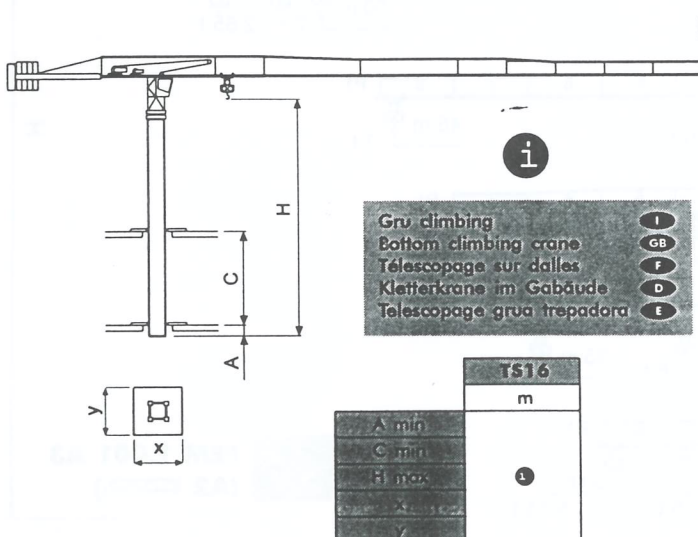
I
GB

Autres implantations
Aufstellmöglichkeiten

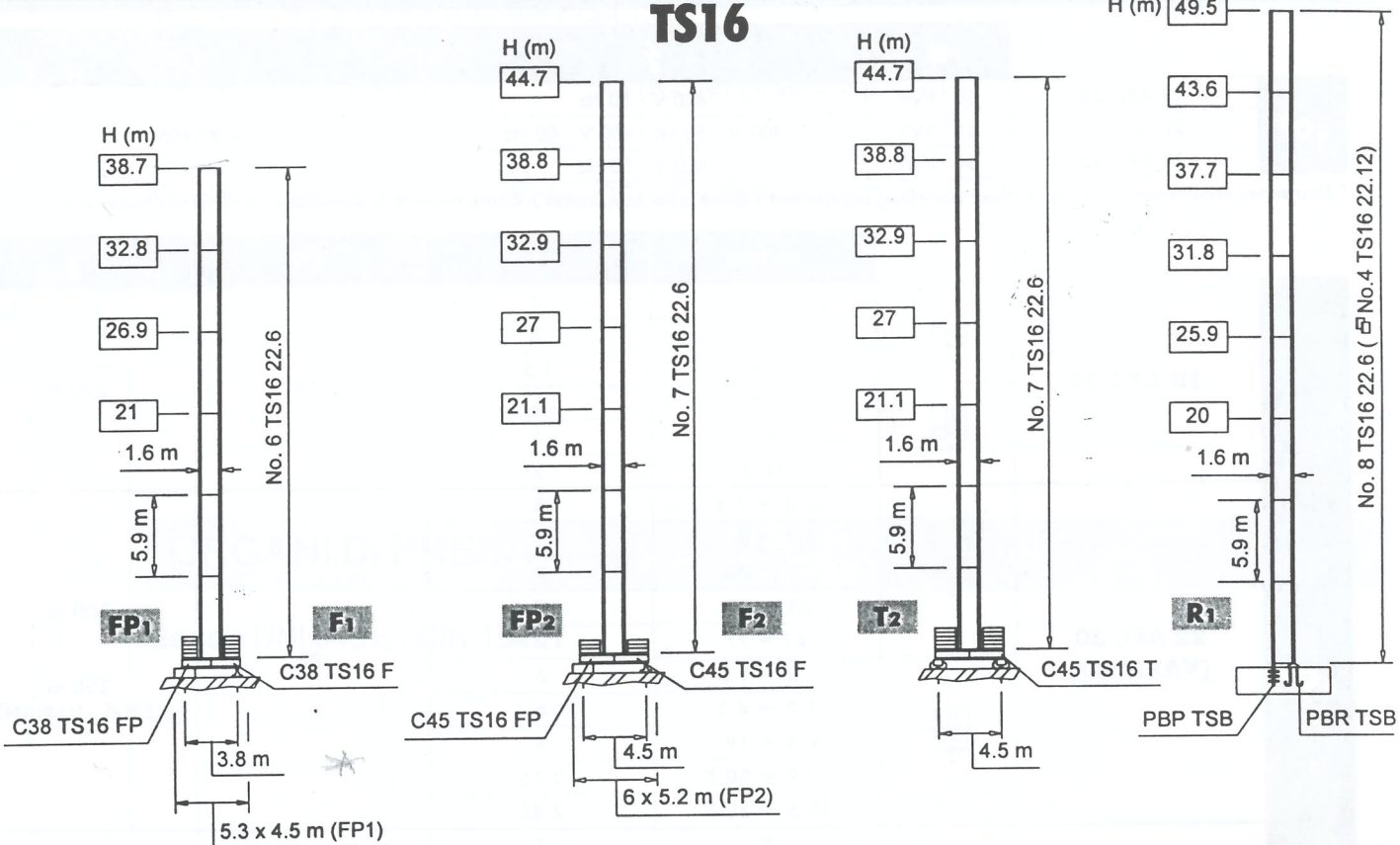
F
D

Otras implantaciones

E



Torre Mast	I GB	Mår Turm	F D	Mástil	E
------------	------	----------	-----	--------	---



H	Altezza massima sotto gancho	I	Max. under hook height	GB	Hauteur maxi. sous crochet	F	Höchste Hackenhöhe	D	Maxima altura bajo gancho	E
⌘	Alternativa	⌘	Alternative	⌘	Alternative	⌘	Alternativlösung	⌘	Alternativa	

